

振动给料机 Vibrating Feeder

振动给料机在生产流程中，用于把块状、颗粒状及粉状物料从贮料仓库或漏斗中均匀连续或定量的给到受料设备中。它已被广泛应用于冶金、煤矿、选矿、建材、化工、磨料等行业的破碎、筛分联合设备中。

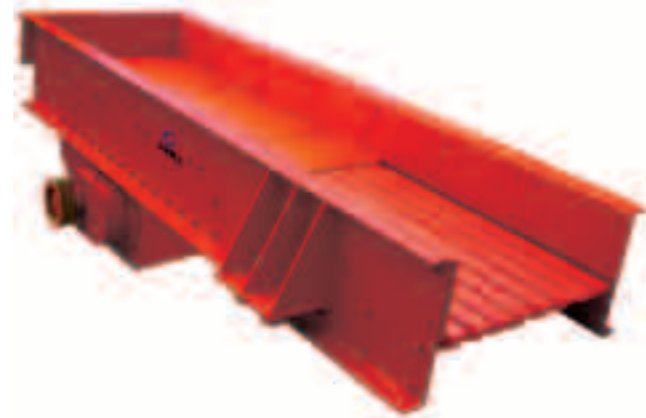
The Vibrating feeder is used to make the block, granule and powder material delivery continuous or quantitative from the storage bin or funnel to the various set of accepting machines. Widely used in metallurgy, coal mining, mineral processing, building materials, chemical, abrasive and other industries of the broken, joint screening device.

性能特点:

- ✓ 体积小、重量轻、结构简单紧凑
- ✓ 安装、维修方便，运行费用低
- ✓ 效率高，给料能力大
- ✓ 噪音低，有利于改善工作环境
- ✓ 耗电小，功率因数高
- ✓ 本设备在共振状态下工作，因而振幅稳定，运行可靠，对各种物料适应性较强
- ✓ 加配电机调速器后不需调整偏心块即可方便地无级调节给料量

Structural features:

- ✓ Small body, light weight, strict structure
- ✓ Easy installation and maintenance, low cost of operation
- ✓ High efficiency, big feeding capacity
- ✓ Low noise, be good to improve working environment
- ✓ Little electric expenditure, and high power efficiency
- ✓ Under the condition of resonance, the amplitude of vibration is stable, operation is reliable, and the adaptability to various of material is strong.



ZSW Series



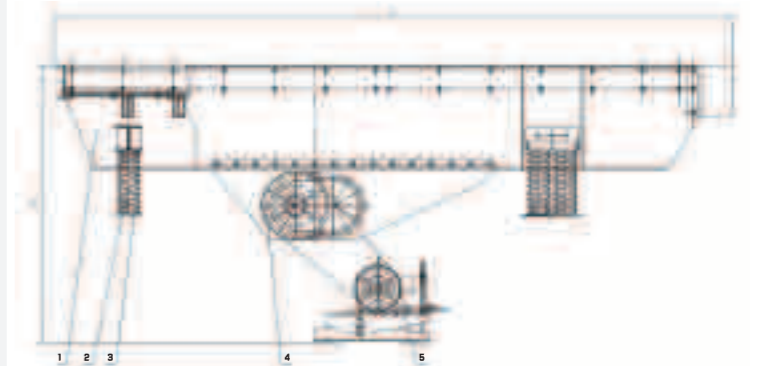
GZD Series



- ✓ With the addition of electric engine governor, we can conveniently adjust feeding capacity without regulating the eccentric block



1. 机身 Body
2. 弹簧 Spring
3. 弹簧底座 Spring Chassis
4. 激振器 Vibration Exciter
5. 振动电机 Vibrating Motor



规格与性能参数表 Specifications

型号 Model	最大进料边长 Max Feed Size (mm)	处理能力 Capacity (t/h)	偏心轴转速 Eccentric Shaft speed (r/min)	电动机功率 Motor Power (kw)	电动机数量 Number of Motor	外形尺寸 Overall Dimensions (mm)	重量 Weight (t)	料槽尺寸 Chute Size (mm)
GZD300x90	425	40-100	---	2x2.2	2	3270x1430x1550	2.46	900x3000
GZD380x96	550	80-150	---	2x(3-3.7)	2	3870x1500x1280	3.0	960x3800
ZSW380x96	550	80-150	500-720	11	1	3882x2224x2121	4.36	960x3800
ZSW420x110	630	120-280	500-800	15	1	4257x2400x2150	5.3	1100x4200
ZSW490x130	700	200-350	500-800	30	1	4982x2580x2083	6.1	1300x4900
ZSW600x150	750	400-560	500-800	37	1	6082x2780x2083	7.8	1500x6000

数据如有改动恕不另行通知
The data is subject to variation without notice.